

International WHO'S WHO Historical Society™  
FOR IMMEDIATE RELEASE

# NewsRelease

*One of the best measurements of an individual's achievement is the rare opportunity to be recognized as one of the world's leading and successful professionals.*

## **MEDIA CONTACT**

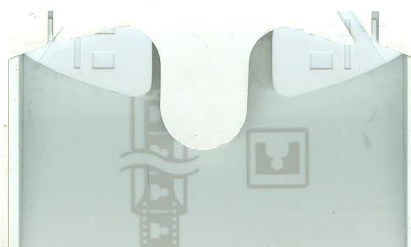
Membership Services  
International WHO'S WHO  
Historical Society™  
2020 Pennsylvania Ave., NW  
PMB #504  
Washington, DC 20006

(202) 544-7136

[whoswhoheadquarters.org](http://whoswhoheadquarters.org)

EgyptAir: E-Commerce Technical Support Systems Manager (2010-Present), Supervisor of Installation and Maintenance (2005-2010), Head of Wireless Communications Department (1998-2005).

For more information contact the International WHO'S WHO Historical Society at 800-200-9337 or 202-544-7136.



International WHO'S WHO Historical Society™  
FOR IMMEDIATE RELEASE

# NewsRelease

*One of the best measurements of an individual's  
achievement is the rare opportunity to be recognized as  
one of the world's leading and successful professionals.*

## MEDIA CONTACT

Membership Services  
International WHO'S WHO  
Historical Society  
Washington, DC 20006  
(202) 544-7136

ISBS) 999-3136  
MEMBERSHIP SERVICES  
INTERNATIONAL WHO'S WHO  
HISTORICAL SOCIETY  
WASHINGTON, DC 20006

EgyptAir: E-Commerce Technical Support Systems Manager (2010-Present), Supervisor  
of Installation and Maintenance (2005-2010), Head of IT Services, Egyptian  
Department of Civil Aviation

Department of Civil Aviation  
of Installation and Maintenance (2005-2010), Head of IT Services, Egyptian  
Department of Civil Aviation

INTERNATIONAL WHO'S WHO HISTORICAL SOCIETY  
MEMBERSHIP SERVICES  
WASHINGTON, DC 20006  
(202) 544-7136

International WHO'S WHO Historical Society™  
FOR IMMEDIATE RELEASE

# NewsRelease

*One of the best measurements of an individual's achievement is the rare opportunity to be recognized as one of the world's leading and successful professionals.*

## MEDIA CONTACT

Membership Services  
International WHO'S WHO  
Historical Society™  
2020 Pennsylvania Ave., NW  
PMB #504  
Washington, DC 20006

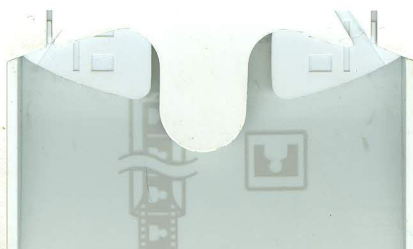
(202) 544-7136

[whoswhoheadquarters.org](http://whoswhoheadquarters.org)

Washington, D.C., January 11, 2016, Assem Abdel Hamed Mousa, E-Commerce Tech Support Systems Manager, EgyptAir, Cairo, Egypt is one of the newest professionals selected for inclusion in International WHO'S WHO Historical Society and will be listed in the 2016 edition of International WHO'S WHO of Professionals.

Inclusion is an accomplishment in itself. International WHO'S WHO Historical Society recognizes the achievements of qualified professionals while simultaneously providing a practical, reference-quality, business-to-business directory of its exclusive membership. Membership and biographical listings in the International WHO'S WHO of Professionals directory is a highly selective process. New members are selected following an in-depth interview and biographical review.

EgyptAir is the flag carrier airline of Egypt. The Airline is based at Cairo International Airport, which is its main hub, operating scheduled passenger and freight services to over 79 destinations in the Middle East, Europe, Africa, Asia and the Americas. One of the world's pioneer airlines, EgyptAir was founded in 1932, and today operates an extensive network of domestic services focused on Cairo the capital of Egypt. Throughout its 82 years of service in the airlines industry, EgyptAir has experienced significant growth. In 2002, EgyptAir became a holding with nine subsidiaries. EgyptAir's fleet consists of about 79 modern aircraft criss-crossing the globe to destinations in 53 countries, fulfilling the needs of business and leisure travelers. The fleet includes the latest generation of aircraft: B777-300 ER, B777-200, A330-300, A330-200, A340, A320, A321, B737- 800 B737-500, EMBREAR 170 and A300-600 freighter and is planning to reach 83 aircraft by the end of year 2014. EgyptAir employs a well experienced and motivated workforce of about 30,000 personnel. One of the factors in EgyptAir's success is its team spirit, which drives the team to be looking constantly for the best possible services being given to its customers, partners and stakeholders. Mr. Assem Mousa serves as E-Commerce Tech Support Systems Manager for EgyptAir. Performing duties as necessary to ensure the continued soundness and stability of operations, he supervises activities and staff involved in maintaining EgyptAir's operation impact at a high level. Mr. Mousa strives to benchmark systems operations against international standards. Possessing technical proficiency and strong leadership capabilities, Mr. Mousa manages EgyptAir's website for availability and response time on frequent flyer site and the frequent flyer systems for customers as well as ensures availability of systems servers. Charged with developing EgyptAir's strategic planning objectives relating to support systems, Mr. Mousa also ensures that related hardware, software and other components are properly selected,



# International WHO'S WHO Historical Society™

## FOR IMMEDIATE RELEASE

# NewsRelease

*One of the best measurements of an individual's achievement is the rare opportunity to be recognized as one of the world's leading and successful professionals.*

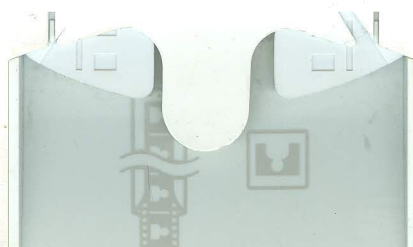
### MEDIA CONTACT

Membership Services  
International WHO'S WHO  
Historical Society™  
2020 Pennsylvania Ave., NW  
PMB #504  
Washington, DC 20006

(202) 544-7136

[whoswhoheadquarters.org](http://whoswhoheadquarters.org)

developed and implemented. In addition, he is responsible for monitoring systems to detect problems/deficiencies and recommending changes and solutions as he is skilled at estimating resource requirements/implementation costs. Reporting to the chief information officer, Mr. Mousa has frequent contact with all department managers. Working in a fast-paced work environment, he travels to different locations to ensure operating systems and sub-systems are functional and operational. Furthering business objectives, Mr. Mousa maintains EgyptAir's CRM software, attends conferences on computing, where he conducts presentations on papers, and introduces new technologies in order to reduce EgyptAir's operational costs. He works as Supervisor for group of people in changing the reservation systems to Amadeus in all EgyptAir offices all round the world. Mr. Mousa has rich management and technical background as he studied/received a Master's in Mobile Satellite Communication. He also completed the required courses for Fellow degree in Management and participated in a joint program between University of Georgia (US) and Cairo University. He is also published in international journals. Letting results speak of his work, he has tackled/overcome some tremendous challenges along his working career as he has designed and introduced new paperless solutions and systems and equipment to enhance productivity. Mr. Mousa succeeded in performing wireless data transfer for messages from radio equipment to computer in analog and digital systems which gave EgyptAir the struts of different status of aircraft. He sends a lot of suggestions to EgyptAir leaders for innovation in management and technical aspects, cost reduction in Intranet and revenue increasing. Previously, Mr. Mousa was Supervisor of Hajj communications procedures in Cairo and Saudi and Operations Supervisor in Kenya and Manila airport for six months. His previous experience in wireless communications includes ID card ray, computer networks and Intranet. Mr. Mousa would like to become not only a Cloud specialist, but Ubiquitous 2020 specialist as well as study at a major university to take full advantage of new opportunities. See the new information technology trend which he introduced regarding Cloud Computing-2020 Ubiquitous Computing at [http://www.edsca.org/pdf/presentation/conference\\_day\\_2/hall\\_b/Assem\\_Moussa.pdf](http://www.edsca.org/pdf/presentation/conference_day_2/hall_b/Assem_Moussa.pdf). Please check the two research papers by writing his full name at Google-Bang-Yahoo-Met Crawler search engines: - Assem Abdel Hamed Mousa or [www.ijird.com](http://www.ijird.com) October edition Cloud-Ubiquitous Computing. Continued learning and education has been keys to his success. He is an Ideal student in Faculty of Engineering as he is good in studies, sports and ethics and has traveled to Germany as a reward. He is looking for a PhD scholarship in Ubiquitous/Cloud.



# International WHO'S WHO Historical Society™



2020 PENNSYLVANIA AVE, N.W. • PMB #504 • WASHINGTON, DC 20006

(800) 200-9337 • (202) 544-7136 • FAX (877) 236-2284 • FAX (202) 544-4469

Assem Abdel Hamed Mousa  
E-Commerce Tech Support  
Systems Manager  
EgyptAir  
7 El Horya St., Nasr City, 9<sup>th</sup> Floor,  
Apt. 94  
Cairo, Egypt 11451

## Important Membership Information

Member Name: Assem Abdel Hamed Mousa

Membership ID#: mousa 2016

Username: assem@egyptair.com

Password: mousa 2016

WHO'S WHO email account: mousa@whoswhoheadquarters.org

Dear Assem Abdel Hamed Mousa:

*Your membership ID# is key for accessing many membership benefits and services, including the "member's only" section on the IWWHS web site!*

I would like to thank you for your membership in the International WHO'S WHO Historical Society™, and personally welcome you to the *International WHO'S WHO of Professionals™* network. Our organization is committed to providing professional networking opportunities and services to over 100,000 members worldwide. As a distinguished professional, your ideas and knowledge will be recognized globally by other participating members. I sincerely hope that you will take advantage of the multitude of valuable opportunities our organization provides.

For over 88 years, the Society has been documenting biographies in history of successful individuals. As a newly inducted member, you too will be able to tap into the knowledge of our professional membership base and successfully advocate on the critical issues of the today.

I encourage you to get acquainted with the enclosed materials that contain exciting information on new programs, and services we offer, along with the benefits of being a member. Then visit our website for a full look at your exclusive membership advantages and begin professional networking with other WHO'S WHO members from around the world by accessing the "member's only" Books Online section and our exclusive knowledge bank (Kbank™).

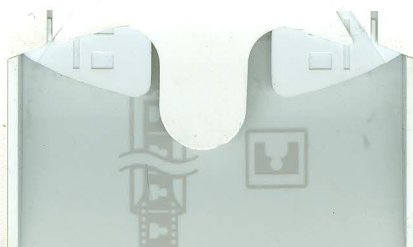
From all of your colleagues at the IWWHS--congratulations and welcome as our newest member! It is always an honor and a privilege to include successful individuals such as you in our membership. I wish you continued success and sincerely hope the *International WHO'S WHO of Professionals™* can play an active role in that success.

Sincerely,

Terrence J. Leifheit  
Executive Director

*Documenting biographies for history since 1928*

[www.internationalwhoswho.com](http://www.internationalwhoswho.com)



**TYPESET  
PROOF  
2016  
EDITION**



# **International WHO'S WHO of Professionals™**

2020 Pennsylvania Avenue, NW • PMB #504 • Washington, DC 20006  
• Telephone: (202) 544-7136 • Fax: (202) 544-4469  
www.whoswhoheadquarters.org

Shown below is the proof of your custom biography created for you by our Editorial Staff, based on the information you provided for inclusion in the 2016 Edition of *International WHO'S WHO of Professionals™*.

- IF YOU WOULD LIKE TO CORRECT WORDS OR SENTENCES, please type or print them in the space provided to the left of the biography below.
- IF YOU WOULD LIKE TO "DELETE" A WORD OR PHRASE, circle it clearly.
- IF YOU DO NOT NEED TO MAKE ANY CHANGES, write the word "ACCEPTED" and sign your name in the space provided for.

We reserve the right to select only the appropriate material deemed to be consistent with the style, standards and limits of space established. In the unlikely event of errors in the publication or any other published materials, the sole responsibility of the publisher will be to correct any such errors in a succeeding edition of the publication. Such a correction is in lieu of any other remedy.

You **MUST SIGN AND RETURN A COPY** of THIS FORM INDICATING THAT YOU HAVE VERIFIED THE BIOGRAPHY WITH ANY INCIDENTAL ADDITIONS OR CORRECTIONS. It **MUST** be RETURNED TO THE EDITORIAL DEPARTMENT as soon as possible.

WE WILL CONSIDER THAT YOUR BIOGRAPHY IS APPROVED "AS IS" IF WE DO NOT RECEIVE A CORRECTED COPY WITHIN TEN (10) BUSINESS DAYS.

Failure to return your signed inclusion constitutes permission expressly given to International WHO'S WHO of Professionals™ to publish the biography "as is" in print or electronic form.

## **USE THIS SPACE TO MAKE YOUR CHANGES**

PLEASE REMEMBER TO PRINT OR TYPE  
Additions will only be included if they conform to the style and space standards of *International WHO'S WHO of Professionals™*

## **DO NOT WRITE IN THIS SPACE**

EXCEPT TO CIRCLE INFORMATION TO BE DELETED.  
ALL MATERIAL IN THE BIOGRAPHY IS SUBJECT TO THE COPYRIGHT LAWS OF THE UNITED STATES OF AMERICA.

### **Assem Abdel Hamed Mousa E-Commerce Tech Support Systems Manager EgyptAir**

7 El Horya St., Nasr City, 9<sup>th</sup> Floor, Apt. 94  
Cairo, Egypt 11451  
+20224723565  
Fax: +20226964656

assem@egyptair.com

**Business Information:** EgyptAir is the flag carrier airline of Egypt. The Airline is based at Cairo International Airport, which is its main hub, operating scheduled passenger and freight services to over 79 destinations in the Middle East, Europe, Africa, Asia and the Americas. One of the world's pioneer airlines, EgyptAir was founded in 1932, and today operates an extensive network of domestic services focused on Cairo the capital of Egypt. Throughout its 82 years of service in the airlines industry, EgyptAir has experienced significant growth. In 2002, EgyptAir became a holding with nine subsidiaries. EgyptAir's fleet consists of about 79 modern aircraft criss-crossing the globe to destinations in 53 countries, fulfilling the needs of business and leisure travelers. The fleet includes the latest generation of aircraft: B777-300 ER, B777-200, A330-300, A330-200, A340, A320, A321, B737- 800 B737-500, EMBREAR 170 and A300-600 freighter and is planning

Submission of, and a signature on this document, or failure to return it to the above listed department within ten (10) working days by the selectee, constitutes permission expressly given to International WHO'S WHO of Professionals™ to publish the above information in print, electronic database or other form. International WHO'S WHO of Professionals™ expressly disclaims all other liability for loss, incidental, or consequential damage, whether arising from negligence, contract, or any other cause to any party for errors in publishing. Participation in any membership program is strictly voluntary and is in no way mandatory for a listing in the publication. Agreement to sponsor the membership does, however, confer specific obligations upon the member. **Our cancellation policy states there is a nonrefundable 25 percent processing fee which will be retained on cancellations that occur within 45 days of the invoice date. The first payment will be retained on cancellations of membership purchased using our Easy Payment Plan which occur within 45 days of invoice date. Any additional customized products and/or services are nonrefundable. After 45 days the membership is nonrefundable. Renewal Packages are nonrefundable.** In the event your membership support options were purchased using a major credit card, your signature on this form is your acknowledgement of the total amount agreed upon and that you agree to perform the obligations set forth in the Cardholder's Agreement with the issuer. The credit card you used to purchase your membership will automatically be charged at the designated auto-renewal period. To avoid getting charged for the next billing period, you need to contact Membership Services before your renewal date. Please contact Membership Services at (202) 544-7136 should you have any questions.

Signature of Acceptance

Date

Copyright © 2015 by International WHO'S WHO Historical Society™ - All Rights Reserved International WHO'S WHO of Professionals™ is a registered trademark of International WHO'S WHO Historical Society™ and is NOT affiliated with any other Who's Who organization.

**TYPESET  
PROOF  
2016  
EDITION**



# **International WHO'S WHO of Professionals™**

2020 Pennsylvania Avenue, NW • PMB #504 • Washington, DC 20006  
• Telephone: (202) 544-7136 • Fax: (202) 544-4469  
www.whoswhoheadquarters.org

Shown below is the proof of your custom biography created for you by our Editorial Staff, based on the information you provided for inclusion in the 2016 Edition of *International WHO'S WHO of Professionals™*.

- IF YOU WOULD LIKE TO CORRECT WORDS OR SENTENCES, please type or print them in the space provided to the left of the biography below.
- IF YOU WOULD LIKE TO "DELETE" A WORD OR PHRASE, circle it clearly.
- IF YOU DO NOT NEED TO MAKE ANY CHANGES, write the word "ACCEPTED" and sign your name in the space provided for.

We reserve the right to select only the appropriate material deemed to be consistent with the style, standards and limits of space established. In the unlikely event of errors in the publication or any other published materials, the sole responsibility of the publisher will be to correct any such errors in a succeeding edition of the publication. Such a correction is in lieu of any other remedy.

You **MUST SIGN AND RETURN A COPY** of THIS FORM INDICATING THAT YOU HAVE VERIFIED THE BIOGRAPHY WITH ANY INCIDENTAL ADDITIONS OR CORRECTIONS. It **MUST** be RETURNED TO THE EDITORIAL DEPARTMENT as soon as possible.

WE WILL CONSIDER THAT YOUR BIOGRAPHY IS APPROVED "AS IS" IF WE DO NOT RECEIVE A CORRECTED COPY WITHIN TEN (10) BUSINESS DAYS.

Failure to return your signed inclusion constitutes permission expressly given to International WHO'S WHO of Professionals™ to publish the biography "as is" in print or electronic form.

## **USE THIS SPACE TO MAKE YOUR CHANGES**

PLEASE REMEMBER TO PRINT OR TYPE  
Additions will only be included if they conform to the style and space standards of *International WHO'S WHO of Professionals™*

## **DO NOT WRITE IN THIS SPACE**

EXCEPT TO CIRCLE INFORMATION TO BE DELETED.  
ALL MATERIAL IN THE BIOGRAPHY IS SUBJECT TO THE COPYRIGHT LAWS OF THE UNITED STATES OF AMERICA.

to reach 83 aircraft by the end of year 2014. EgyptAir employs a well experienced and motivated workforce of about 30,000 personnel. One of the factors in EgyptAir's success is its team spirit, which drives the team to be looking constantly for the best possible services being given to its customers, partners and stakeholders. Mr. Assem Mousa serves as E-Commerce Tech Support Systems Manager for EgyptAir. Performing duties as necessary to ensure the continued soundness and stability of operations, he supervises activities and staff involved in maintaining EgyptAir's operation impact at a high level. Mr. Mousa strives to benchmark systems operations against international standards. Possessing technical proficiency and strong leadership capabilities, Mr. Mousa manages EgyptAir's website for availability and response time on frequent flyer site and the frequent flyer systems for customers as well as ensures availability of systems servers. Charged with developing EgyptAir's strategic planning objectives relating to support systems, Mr. Mousa also ensures that related hardware, software and other components are properly selected, developed and implemented. In addition, he is responsible for monitoring systems to detect problems/deficiencies and recommending changes and solutions as he is skilled at estimating resource requirements/implementation costs. Reporting to the chief information officer, Mr. Mousa has frequent contact with all department managers. Working in a fast-paced work environment, he travels to different locations to ensure operating systems and sub-systems are functional and operational. Furthering business objectives, Mr. Mousa maintains EgyptAir's

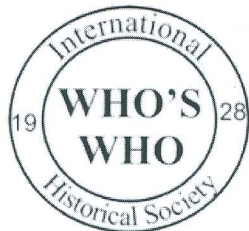
Submission of, and a signature on this document, or failure to return it to the above listed department within ten (10) working days by the selectee, constitutes permission expressly given to International WHO'S WHO of Professionals™ to publish the above information in print, electronic database or other form. International WHO'S WHO of Professionals™ expressly disclaims all other liability for loss, incidental, or consequential damage, whether arising from negligence, contract, or any other cause to any party for errors in publishing. Participation in any membership program is strictly voluntary and is in no way mandatory for a listing in the publication. Agreement to sponsor the membership does, however, confer specific obligations upon the member. **Our cancellation policy states there is a nonrefundable 25 percent processing fee which will be retained on cancellations that occur within 45 days of the invoice date. The first payment will be retained on cancellations of membership purchased using our Easy Payment Plan which occur within 45 days of invoice date. Any additional customized products and/or services are nonrefundable. After 45 days the membership is nonrefundable. Renewal Packages are nonrefundable.** In the event your membership support options were purchased using a major credit card, your signature on this form is your acknowledgement of the total amount agreed upon and that you agree to perform the obligations set forth in the Cardholder's Agreement with the issuer. The credit card you used to purchase your membership will automatically be charged at the designated auto-renewal period. To avoid getting charged for the next billing period, you need to contact Membership Services before your renewal date. Please contact Membership Services at (202) 544-7136 should you have any questions.

Signature of Acceptance

Date

Copyright © 2015 by International WHO'S WHO Historical Society™ - All Rights Reserved International WHO'S WHO of Professionals™ is a registered trademark of International WHO'S WHO Historical Society™ and is NOT affiliated with any other Who's Who organization.

**TYPESET  
PROOF  
2016  
EDITION**



# **International WHO'S WHO of Professionals™**

2020 Pennsylvania Avenue, NW • PMB #504 • Washington, DC 20006  
• Telephone: (202) 544-7136 • Fax: (202) 544-4469  
www.whoswhoheadquarters.org

Shown below is the proof of your custom biography created for you by our Editorial Staff, based on the information you provided for inclusion in the 2016 Edition of *International WHO'S WHO of Professionals™*.

- IF YOU WOULD LIKE TO CORRECT WORDS OR SENTENCES, please type or print them in the space provided to the left of the biography below.
- IF YOU WOULD LIKE TO "DELETE" A WORD OR PHRASE, circle it clearly.
- IF YOU DO NOT NEED TO MAKE ANY CHANGES, write the word "ACCEPTED" and sign your name in the space provided for.

We reserve the right to select only the appropriate material deemed to be consistent with the style, standards and limits of space established. In the unlikely event of errors in the publication or any other published materials, the sole responsibility of the publisher will be to correct any such errors in a succeeding edition of the publication. Such a correction is in lieu of any other remedy.

You **MUST SIGN AND RETURN A COPY** of THIS FORM INDICATING THAT YOU HAVE VERIFIED THE BIOGRAPHY WITH ANY INCIDENTAL ADDITIONS OR CORRECTIONS. It **MUST** be RETURNED TO THE EDITORIAL DEPARTMENT as soon as possible.

WE WILL CONSIDER THAT YOUR BIOGRAPHY IS APPROVED "AS IS" IF WE DO NOT RECEIVE A CORRECTED COPY WITHIN TEN (10) BUSINESS DAYS.

Failure to return your signed inclusion constitutes permission expressly given to International WHO'S WHO of Professionals™ to publish the biography "as is" in print or electronic form.

## **USE THIS SPACE TO MAKE YOUR CHANGES**

PLEASE REMEMBER TO PRINT OR TYPE  
Additions will only be included if they conform to the style and space standards of *International WHO'S WHO of Professionals™*

## **DO NOT WRITE IN THIS SPACE**

EXCEPT TO CIRCLE INFORMATION TO BE DELETED.  
ALL MATERIAL IN THE BIOGRAPHY IS SUBJECT TO THE COPYRIGHT LAWS OF THE UNITED STATES OF AMERICA.

CRM software, attends conferences on computing, where he conducts presentations on papers, and introduces new technologies in order to reduce EgyptAir's operational costs. He works as Supervisor for group of people in changing the reservation systems to Amadeus in all EgyptAir offices all round the world. Mr. Mousa has rich management and technical background as he studied/received a Master's in Mobile Satellite Communication. He also completed the required courses for Fellow degree in Management and participated in a joint program between University of Georgia (US) and Cairo University. He is also published in international journals. Letting results speak of his work, he has tackled/overcome some tremendous challenges along his working career as he has designed and introduced new paperless solutions and systems and equipment to enhance productivity. Mr. Mousa succeeded in performing wireless data transfer for messages from radio equipment to computer in analog and digital systems which gave EgyptAir the struts of different status of aircraft. He sends a lot of suggestions to EgyptAir leaders for innovation in management and technical aspects, cost reduction in Intranet and revenue increasing. Previously, Mr. Mousa was Supervisor of Hajj communications procedures in Cairo and Saudi and Operations Supervisor in Kenya and Manila airport for six months. His previous experience in wireless communications includes ID card ray, computer networks and Intranet. Mr. Mousa would like to become not only a Cloud specialist, but Ubiquitous 2020 specialist as well as study at a major university to take full advantage of new opportunities. See

Submission of, and a signature on this document, or failure to return it to the above listed department within ten (10) working days by the selectee, constitutes permission expressly given to International WHO'S WHO of Professionals™ to publish the above information in print, electronic database or other form. International WHO'S WHO of Professionals™ expressly disclaims all other liability for loss, incidental, or consequential damage, whether arising from negligence, contract, or any other cause to any party for errors in publishing. Participation in any membership program is strictly voluntary and is in no way mandatory for a listing in the publication. Agreement to sponsor the membership does, however, confer specific obligations upon the member. *Our cancellation policy states there is a nonrefundable 25 percent processing fee which will be retained on cancellations that occur within 45 days of the invoice date. The first payment will be retained on cancellations of membership purchased using our Easy Payment Plan which occur within 45 days of invoice date. Any additional customized products and/or services are nonrefundable. After 45 days the membership is nonrefundable. Renewal Packages are nonrefundable.* In the event your membership support options were purchased using a major credit card, your signature on this form is your acknowledgement of the total amount agreed upon and that you agree to perform the obligations set forth in the Cardholder's Agreement with the issuer. The credit card you used to purchase your membership will automatically be charged at the designated auto-renewal period. To avoid getting charged for the next billing period, you need to contact Membership Services before your renewal date. Please contact Membership Services at (202) 544-7136 should you have any questions.

Signature of Acceptance

Date

Copyright © 2015 by International WHO'S WHO Historical Society™ - All Rights Reserved International WHO'S WHO of Professionals™ is a registered trademark of International WHO'S WHO Historical Society™ and is NOT affiliated with any other Who's Who organization.